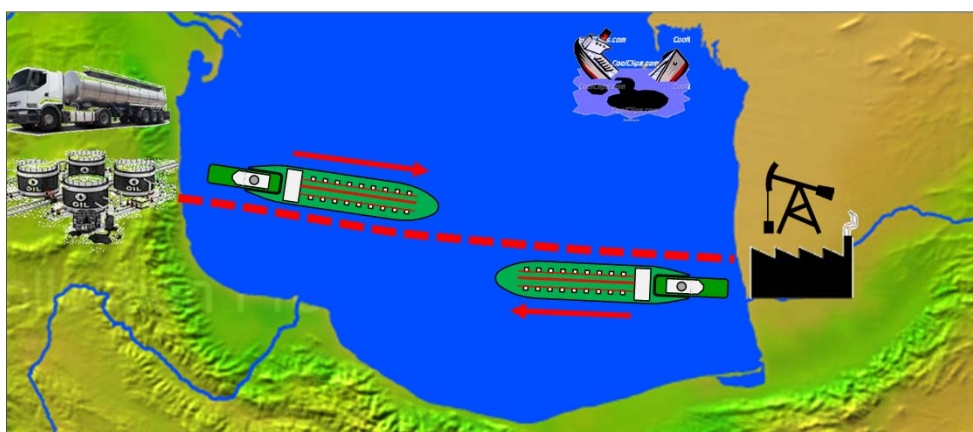
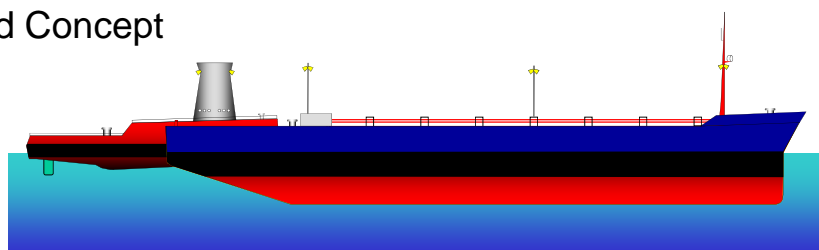
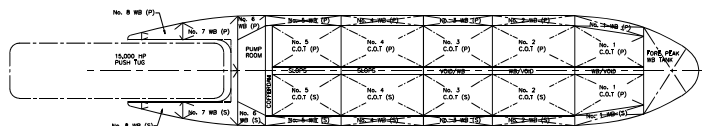
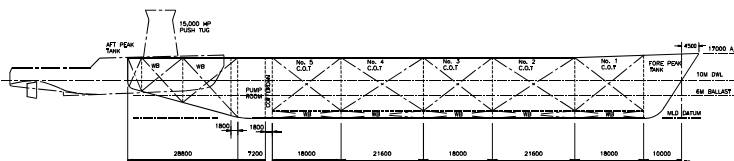


## IE- Push Barge Tug & Barge Configuration

- Client:** Internal
- Project:** Caspian Sea
- Scope:** Advanced Concept
- Date:** 2009
- Manhours:** 3,300
- Location:** TBA



### Project Description

A push barge project, allowing the use of multiple oil carrier barges with two push barge tugs saving on the expense of dedicated shuttle tankers.

### Irvine Scope

Design a new push barge arrangement suitable for transporting large volumes of oil.

### Principal Particulars – Barge Vessel

Design Status :	Advanced concept
Application :	Benign to moderate environments
Topsides :	N/A
Length :	145.00 m
Breadth :	28.80 m
Depth :	15.30 m
Draught :	10.00 m
Storage :	25,000m <sup>3</sup>
Moorings :	N/A
Construction :	Steel
Docs. Available:	Concept review (in-house) General arrangement drawings Internal study

**Irvine Engineering Pte Ltd**

39, Pandan Road, Singapore. 609281

Tel.: +65 91093201 or +65 68539106

e.mail: [enquiries@irvineeng.com](mailto:enquiries@irvineeng.com)

Website: [www.irvineeng.com](http://www.irvineeng.com)

