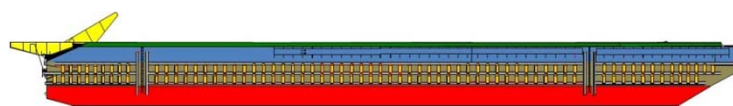
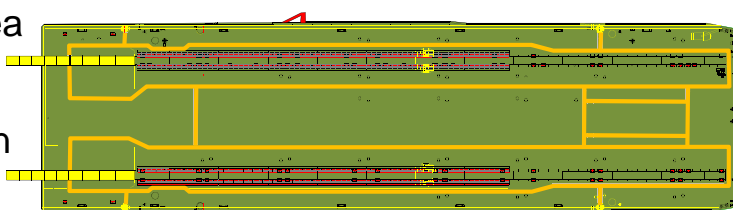


## IE- 179 Launch Barge

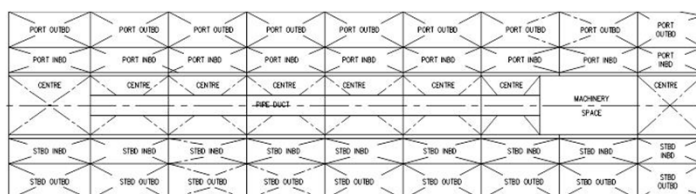
**Client:** Internal  
**Project:** Caspian Sea  
**Scope:** AFC Design  
**Date:** 2009  
**Manhours:** 12,300  
**Location:** TBA



Profile



Plan



Ballast/Tank Plan

### Project Description

This new launch barge is capable of launching large size jackets. Its design makes it an easy fabrication and build job for most competent shipyards. The ballasting arrangement works in conjunction with the rocker arms to lower and launch a jacket from the barge.

### Irvine Scope

Design a new large launch barge suitable for transporting and launching large jackets.

### Principal Particulars

Design Status :	Approved deign (RMRS)
Application :	Benign to moderate environments
Topsides :	Classified
Length :	179.40 m
Breadth :	45.00 m
Depth :	14.00 m
Displacement :	-
Storage :	N/A
Moorings :	N/A
Construction :	Steel
Docs. Available:	Full design documentations

**Irvine Engineering Pte Ltd**

39, Pandan Road, Singapore. 609281

Tel.: +65 91093201 or +65 68539106

e.mail: [enquiries@irvineeng.com](mailto:enquiries@irvineeng.com)

Website: [www.irvineeng.com](http://www.irvineeng.com)

