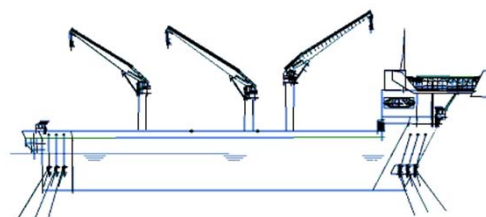
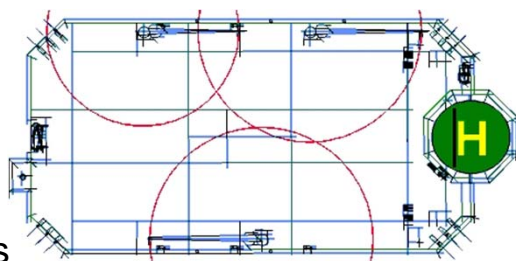


IE- TOP 50 FPSO

Client:	Irvine Engineering
Project:	West of African Proposals
Scope:	Conceptual Design
Date:	2010
Manhours:	2,100
Location:	West of Africa



Project Description

The unit is a low cost benign environment FPSO designed to meet the needs of marginal to large fields. A fully completed topsides facilities can be skidded in a single piece onto the hull thus minimising hook-up and commissioning activities. The vessel has a very large topsides weight carrying capacity. Typically capable of handling up to 15 risers. A simple spread mooring system is used for station keeping.

Irvine Scope

Develop a medium sized Production barge, benign deep water environments such as West of Africa. It's key feature is a large topsides payload. Originally proposed as a host platform for a Methanol And Production System (MAPS) for the Escravos field development WoA.

Principal Particulars

Design Status :	Concept
Application :	Benign environments
Length :	116.14 m
Breadth :	62.0 m
Depth :	14.5 m
Storage :	51000 m ³
Construction :	Stiffened steel flat plate sections. Double side shell structure
Topsides :	'Plug and Play' Process or field specific concept. Maximum topsides weight approximately 20000 t
Alternative Use:	FSU
Docs. Available:	General arrangement drawings Marine systems schematics Structural arrangements

Irvine Engineering Pte Ltd

39, Pandan Road, Singapore. 609281

Tel.: +65 91093201 or +65 68539106

e.mail: enquiries@irvineeng.com

Website: www.irvineeng.com

